

# 쇄골 골절 후 발생한 쇄골하 동맥 협착에 의한 지연성 상완 동맥 폐색 - 1예 보고 -

강철형·조철현·손승원·배기철·김형태\*

계명대학교 의과대학 정형외과학교실, 외과학교실\*

쇄골 골절 후에 발생하는 혈관 손상은 매우 드물게 발생하지만 심각한 문제를 일으킬 수 있는 합병증 중의 하나이며, 골절이 일어날 때 함께 발생하거나 지연성으로도 생길 수 있다. 저자들은 매우 드문 합병증 중의 하나인 쇄골 골절에 대해 관혈적 정복술 및 금속판 고정술 시행 후 과도한 연부 조직 박리로 인한 반흔 조직에 의해 생긴 쇄골하 동맥 협착에 의한 지연성 상완 동맥 폐색 1예를 경험하였기에 문헌 고찰과 함께 보고하는 바이다.

색인 단어: 쇄골 골절, 쇄골하 동맥 협착, 상완 동맥 폐색

## Late-onset Brachial Artery Occlusion caused by Subclavian Artery Stenosis after Clavicular Fracture - A Case Report -

Chul-Hyung Kang, M.D., Chul-Hyun Cho, M.D., Sung-Won Sohn, M.D.,  
Ki-Chul Bae, M.D., Hyung-Tae Kim, M.D.\*

Departments of Orthopedic Surgery, General Surgery\*,  
College of Medicine, Keimyung University, Daegu, Korea

Although vascular injury after clavicular fracture is a extremely rare, it is a complication which is serious problem. Vascular injury associated with the fracture can be immediate or delayed. We report a case of late-onset brachial artery occlusion caused by subclavian artery stenosis with excessive scar tissue after open reduction and plate fixation for clavicular fracture and include a review of the literature.

**Key Words:** Clavicular fracture, Subclavian artery stenosis, Brachial artery occlusion

가 , 가 1,2,7) . 가 4) 1

통신저자 : 조 철 현

194

Tel : 053-250-7729·Fax : 053-250-7205  
E-mail : oscho5362@dsmc.or.kr

Address reprint requests to : Chul-Hyun Cho, M.D.

Department of Orthopedic Surgery, College of Medicine, Keimyung University, 194, Dongsan-dong, Jung-gu, Daegu 700-712, Korea  
Tel : 82-53-250-7729 · Fax : 82-53-250-7205  
E-mail : oscho5362@dsmc.or.kr

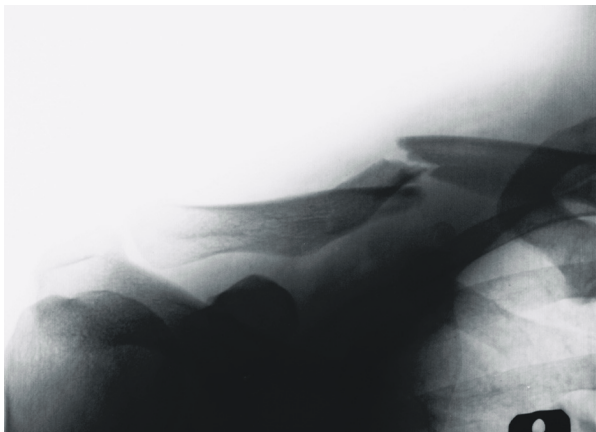
증례 보고

37 2

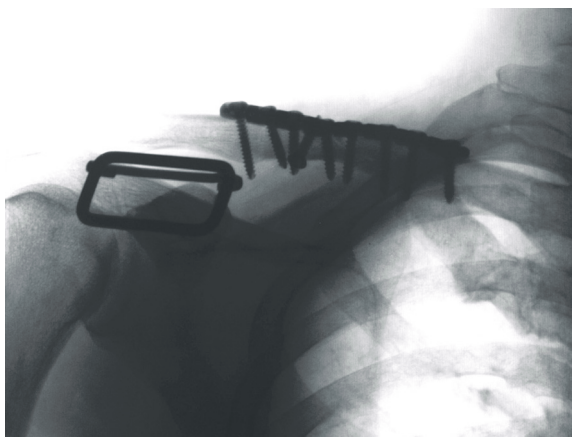
4 가

5

(Fig. 1), 2



**Fig. 1.** Preoperative radiograph shows a fracture in the middle of the right clavicle with a butterfly fragment.



**Fig. 2.** Immediate postoperative radiograph shows stabilization of fracture with interfragmentary screw and AO reconstruction plate.

(Fig. 2).

, 2

가

(bruit) 가

1/3

가

(Fig. 3),

(stenosis)

(thrombi)

(emboli)

(occlusion)

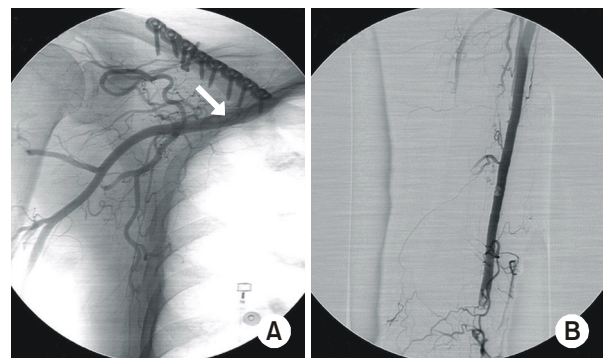
가

(pseudoaneurysm)

(Fig. 4).



**Fig. 3.** CT-angiogram shows compression of subclavian artery by excessive scar tissue.



**Fig. 4.** (A) Angiogram shows stenosis of subclavian artery with thrombus. (B) Angiogram shows complete obstruction of blood flow in the brachial artery.

(antecubital fossa) 3 cm 가 , 가 , 4  
 4.2 French Fogarty Catheter  
 7~8 cm (embolectomy) 가 8 ,  
 Doppler , 1  
 8  
 고 찰

참 고 문 헌

가 ,  
 (subclavius) 가 (deep  
 cervical fascia) 가 ,  
 가 가 3,6)  
 가 ,  
 1,4,5)  
 , 6,8)  
 가

- 1) **Cho DY, Hahm YG and Woo BC:** Subclavian artery thrombosis after operative treatment of clavicular fracture: a case report. *J Korean Orthop Assoc*, **31**: 1192-1196, 1996.
- 2) **Connolly JF and Dhne R:** Nonunion of the clavicle and thoracic outlet syndrome. *J Trauma*, **29**: 1127-1132, 1989.
- 3) **Dash UN and Handler D:** A case of compression of subclavian vessels by a fractured clavicle treated by excision of the first rib. *J Bone Joint Surg*, **42-A**: 798-801, 1960.
- 4) **Davidovic LB, Kostic DM, Jakovljevic NS, Kuzmanovic IL and Simic TM:** Vascular thoracic outlet syndrome. *World J Surg*, **27**: 545-550, 2003.
- 5) **Johnson B and Thursby P:** Subclavian artery injury caused by a screw in a clavicular compression plate. *Cardiovasc Surg*, **4**: 414-415, 1996.
- 6) **Lee SC, Yoo MJ, Lyu SJ, Park JY and Kim MH:** Fracture of clavicle accompanied by injury of subclavian artery, hemothorax and arterial occlusion by thromboembolism: a case report. *J Korean Fracture Soc*, **8**: 885-888, 1995.
- 7) **Lee WS, Chung WY, Jeon TS, Kim YS and Kim NH:** Delayed brachial plexus palsy due to clavicular fracture: A case report. *J Korean Fracture Soc*, **16**: 230-234, 2003.
- 8) **Lim EV and Day LJ:** Subclavian vein thrombosis following fracture of the clavicle: A case report. *Orthopedics*, **10**: 349-351, 1987.
- 9) **Olin T:** Arterial complications in thoracic outlet compression syndrome. *Acta Radiol*, **56**: 97-112, 1961.